

Anti-Amphiphysin 2 Antibody
Rabbit polyclonal antibody to Amphiphysin 2
Catalog # AP61052**Specification**

Anti-Amphiphysin 2 Antibody - Product Information

Application	WB, IHC
Primary Accession	O00499
Other Accession	O08539
Reactivity	Human, Mouse, Rat
Host	Rabbit
Clonality	Polyclonal
Calculated MW	64699

Anti-Amphiphysin 2 Antibody - Additional Information**Gene ID** 274**Other Names**

AMPHL; Myc box-dependent-interacting protein 1; Amphiphysin II; Amphiphysin-like protein; Box-dependent myc-interacting protein 1; Bridging integrator 1

Target/Specificity

Recognizes endogenous levels of Amphiphysin 2 protein.

Dilution

WB~~WB (1/500 - 1/1000), IH (1/50 - 1/100)

IHC~~1:100~500

Format

Liquid in 0.42% Potassium phosphate, 0.87% Sodium chloride, pH 7.3, 30% glycerol, and 0.09% (W/V) sodium azide.

Storage

Store at -20 °C. Stable for 12 months from date of receipt

Anti-Amphiphysin 2 Antibody - Protein Information**Name** BIN1**Synonyms** AMPHL**Function**

Is a key player in the control of plasma membrane curvature, membrane shaping and membrane remodeling. Required in muscle cells for the formation of T-tubules, tubular invaginations of the plasma membrane that function in depolarization-contraction coupling (PubMed:24755653). Is a negative regulator of endocytosis (By similarity). Is also involved in the regulation of intracellular vesicles

sorting, modulation of BACE1 trafficking and the control of amyloid-beta production (PubMed:27179792). In neuronal circuits, endocytosis regulation may influence the internalization of PHF-tau aggregates (By similarity). May be involved in the regulation of MYC activity and the control cell proliferation (PubMed:8782822). Has actin bundling activity and stabilizes actin filaments against depolymerization in vitro (PubMed:28893863).

Cellular Location

[Isoform BIN1]: Nucleus. Cytoplasm Endosome {ECO:0000250|UniProtKB:O08539}. Cell membrane, sarcolemma, T- tubule {ECO:0000250|UniProtKB:O08839}

Tissue Location

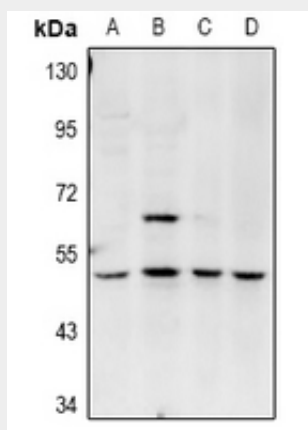
Ubiquitous. Highest expression in the brain and muscle (PubMed:9182667). Expressed in oligodendrocytes (PubMed:27488240). Isoform IIA is expressed only in the brain, where it is detected in the gray matter, but not in the white matter (PubMed:27488240). Isoform BIN1 is widely expressed with highest expression in skeletal muscle.

Anti-Amphiphysin 2 Antibody - Protocols

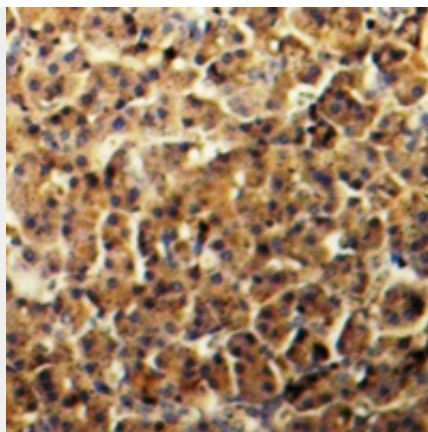
Provided below are standard protocols that you may find useful for product applications.

- [Western Blot](#)
- [Blocking Peptides](#)
- [Dot Blot](#)
- [Immunohistochemistry](#)
- [Immunofluorescence](#)
- [Immunoprecipitation](#)
- [Flow Cytometry](#)
- [Cell Culture](#)

Anti-Amphiphysin 2 Antibody - Images



Western blot analysis of Amphiphysin 2 expression in C6 (A), MEF (B), HeLa (C), MG63 (D) whole cell lysates.



Immunohistochemical analysis of Amphiphysin 2 staining in human pancreas formalin fixed paraffin embedded tissue section. The section was pre-treated using heat mediated antigen retrieval with sodium citrate buffer (pH 6.0). The section was then incubated with the antibody at room temperature and detected using an HRP conjugated compact polymer system. DAB was used as the chromogen. The section was then counterstained with haematoxylin and mounted with DPX.

Anti-Amphiphysin 2 Antibody - Background

KLH-conjugated synthetic peptide encompassing a sequence within the C-term region of human Amphiphysin 2. The exact sequence is proprietary.